

Dingo Servo Mounts

OO Tension Lock Uncoupler Kit

Safety Precautions.

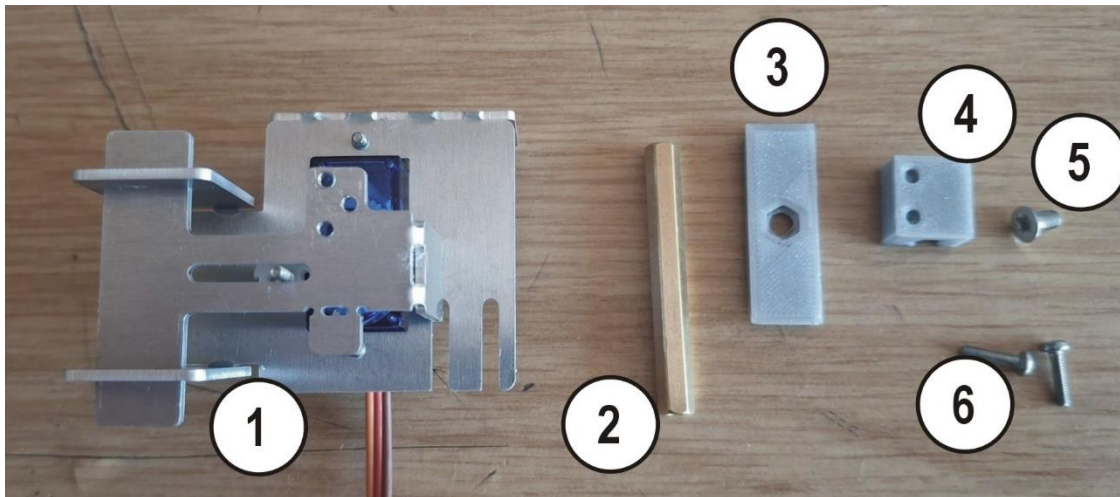
Before installing this product, make sure that you have read the full instruction guide and are comfortable with the requirements.

Make sure that all parts, especially plastic packets, are kept away from young children.

These units are not toys, but serious modelling parts.

Description and Origin

This Uncoupler Unit is designed to operate below the base board for the operation of Tension Lock Couplers in OO scale



1	Dingo Servo Mount Ver 1B	NOT Included
2	40mm x M3 Hex Standoff	1
3	Lifting Plate	1
4	Clamping Block	1
5	M3 x 6mm CSK Pozi Machine Screw	1
6	M2 x 8mm Pozi Pan Head Machine Screw	2

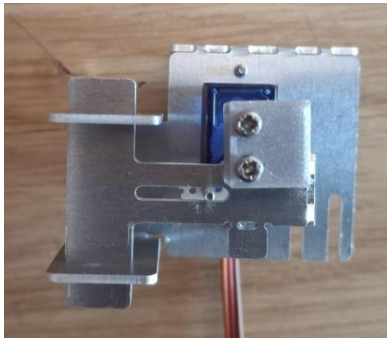
Dingo Servo Mounts

OO Tension Lock Uncoupler Kit

Assembly

Assemble the Dingo Servo Mounts Signal Ver 1B mount as per the instructions for said mount

Fit the lifting plate to the top of the Hex standoff with the M6 x 6mm CSK screw making sure that the hex bar locates properly into the socket in the bottom of the lifter plate



Fit the clamp to the Signal mount using the 2 M2 x 8mm screws in the holes that would normally have housed the M2 x 3mm screws on a normal signal operation
Do not tighten the screws all the way.

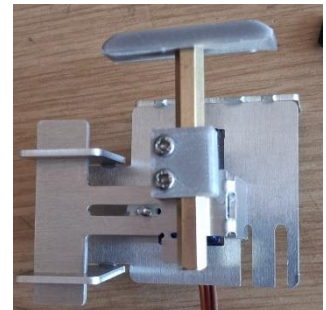
Attaching to the layout

Drill a 6 – 6.5mm hole through the centre of your track where the uncoupler will be.

Now drop the lifter assembly through the hole making sure that it is square to the track and not fouling in any way

Now carefully fit the signal mount assembly to the bottom of the layout such that the hex bar slides into the slot on the clamp

Once in position tighten the clamp screws lightly and then fix the signal mount to the baseboard with its flange fixing screws.



When setting up the travel distance make sure that at the lower setting point the lifter bar just touches the track sleepers gently – too much pressure here can damage the unit or burn out your servo motor

Adjust the upper limit as required to move your couplings just enough to uncouple.

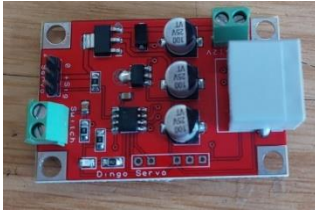
A switch can be added to the mount to allow feedback to your control gear.

Dingo Servo Mounts have a single servo board unit and a Twin servo controller board which will operate this unit.

Dingo Servo Mounts

OO Tension Lock Uncoupler Kit

Other control boards are on offer from MERG (in kit form)
or from companies like Megapoints and Tam Valley Depot.



I hope you have many trouble free hours
operating this unit.

As this is a new product, I welcome feedback to improve the units as we move forward.

Dave Ingoldby
Mobile 07754901324
www.dingoservo.co.uk

If you haven't already seen our amazing servo mounts in action, please check out the "Video Links"
Page on our website or go to our YouTube page.