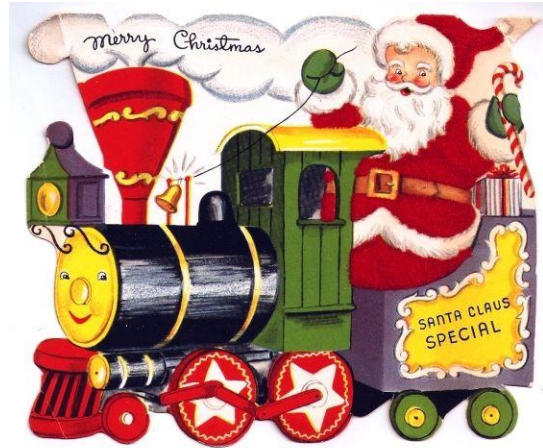


Dingo Servo Mounts



Newsletter
December
2024



Hi, once again, fellow modellers.

Believe it or not, Christmas is just around the corner and the shops are full of the latest Christmas treats.

This year seems to have flown by and all the plans and exhibitions are now a thing of the past and we look forward to 2025 and new adventures there.

The picture on the left was taken at the Uckfield show by Adrian Colenutt and very kindly sent to me by post.



1. Postage Issues.

Since Royal Mail have upped their First-Class postage rates, I have decided that we will post small orders (Under 100g) as per normal in an envelope with first class stamps.

Any orders over 100g will be sent with Royal Mail Tracked 48.

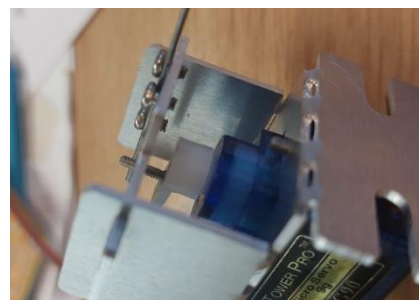
This has 2 advantages, firstly, it is cheaper so that we can keep postage rates as they are for the time being and secondly, it provides full tracking of the parcel.

Overseas parcels will be sent at the going rates at the time of purchase and will be so entered on the invoice.

2. Revised Micro10 V2B

In line with the developments, we have made in our mounts over the last couple of years, we are now modifying the Micro 10 slightly in terms of the drive screws.

No longer will you need to battle to get that fiddly self-tapper into the servo horn.



The newer version will use the M1.6 x 8mm machine screw which is inserted into the back of the horn before assembling the servo similar to the way the mini mounts work. This means that the whole kit and kaboodle simply slides in from the back of the mount to line up with the slider slot and is simply fixed with the 2 M2 x 6mm screws. This makes for a better mount as the machine screw is not as coarse and the self-tapper so should last longer. It also makes assembly much simpler. Once current stocks are exhausted, we will bring this in as Micro10 V2B



3. Servo Saga

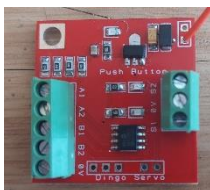
After much searching around I have now begun stocking the Fitec FS90 servos which we will use to replace the HobbyKing Hk15178 servos

Initial reports and testing of these servos has been very satisfactory. They are quiet and smooth much like the HobbyKing ones and at the moment I can sell them at the same price as we did the HobbyKing's.



We continue to stock the Power HD servos in both 3 g and 9g varieties as well as some SG90 clones. More details and pricing structures are on our website.

4. Push Button Prototype.



This is another small (33x33mm) PCB to interface with our twin boards to allow the use of Push Buttons instead of toggle switches.

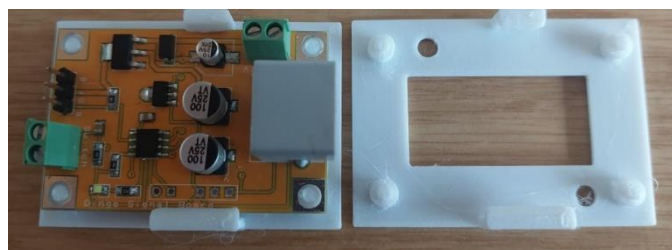
It can also be used for those using a wand and studs for operating points and signals.

We are still finalising the firmware on this unit and the PC boards are now in on the 4 channel units to interface with the Multi Control Boards.

5. PCB Mounting Brackets

Mounting PCB's has always been a challenge.

I have often just screwed them down to the baseboard with some small flange screws, but there has to be a better way as always.

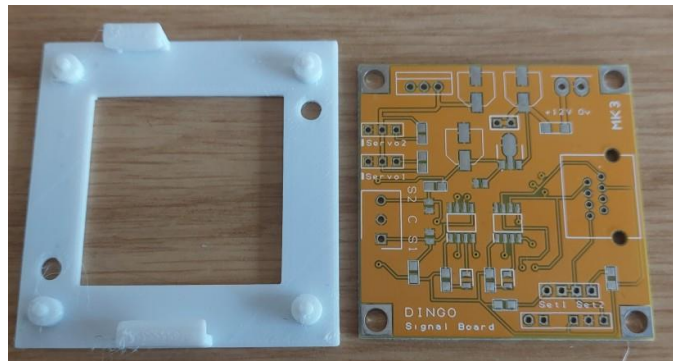


On a recent Zoom meeting, Fraser Smith showed us one of his PCB clips and I thought I would have a go at something similar.

Initial tests with PLA filament proved unsatisfactory as the clips on the side of the bracket proved fragile and easily broke off.

I have now done some tests with PETG filament which seem to be much better and, so far I have been unable to break one.

Once I am satisfied with the results, I aim to market them complete with a couple of flange screws for each of the main PCB's we sell.



Well, I think that's all for this time

Why not come and visit our stand at one of the shows we will be attending next year and see the mounts in the flesh.

*May I take this opportunity to thank you for your custom over the past year
and to wish you and yours a very Happy Christmas
and a great modelling 2025*

Keep well and happy modelling

With Kind Regards

Dave

