

Dingo Servo Mounts



Newsletter Autumn 2024



Hi, once again, fellow modellers.

The song says “When Autumn leaves start to fall” and, as they say, This is It!

I always get a bit mixed up as having spent so long in the Southern hemisphere we really should be going into Spring!

It has been a strange summer for me this year starting off with my back surgery which has been very positive.

Now being able to walk more easily, I managed to get to the Chatham Dock Yard show at the end of July and it was good to re-connect with many friends and to meet many more modellers.

We had quite a lot of family visits and holidays which took me away from my design desk for a bit, but I’m pleased to say that I have quite a lot to share with you in this newsletter.

1. The new SuperSlim Signal Mount.



This mount came about thanks to the insights of Chris Majer who has been one of my best customers of our signal mounts.

He asked if I could develop a slim signal which was (a) shorter than the SlimSignal and (b) stackable so that one could get a double or even a triple without having a wider hole in the baseboard.

Enter the SuperSlim which is 10mm shorter than the SlimSignal and can be stacked as many times as you have depth under the baseboard.



It comes in 2 options.

1. The main or top unit which is similar to the SlimSignal
2. The extension unit which is designed to bolt onto the top unit and is slightly offset to allow the actuator wires to pass each other easily.

Both units will be in stock by the time you read this.

Video here <https://youtu.be/N2zLfYAU8g>

2. Magnets et al.



The magnet clip saga continues

We started with the orange blocks which were then reduced in size to the brown ones.

Another development was the purple ones which allowed the actuator wire to be lifted off more easily, but sadly was in danger of losing the top magnet in transport.

A side development was the roller magnet holder which allows one to remove and then re-insert the actuator wire, but only on the Single Signal Ver 1A or B

The latest one is the little grey one which is much thinner and is easier to set up as the long magnet is flush with the bottom of the holder.

We have also made up a “wand” which allows the removal of the top magnet without taking the block apart as long as it is done before removing the actuator wire.

But I'll let the video do the talking.

<https://youtu.be/gdmArf5u3Uk>

3. DCC Interface



This board has now been finalised and is in stock.

My thanks to Kevin Dickerson who did a lot of testing for me and has proved that the unit works with the following brands.

NCE, ESU ECOS, Digitrax and Signatrak

The only ones that might have an issue are Hornby Select and the MERG units.

These are designed to integrate with our twin boards so as to be backwards compatible.

4. Servo Saga

The HobbyKing HK15178's are now definitely discontinued (We still have some)

However, I have managed to get a much better deal on the PowerHD HD1900A servos and will be able to keep the prices of these servos at current levels.



I also bought a few of the HobbyKing HK928BB servos with resin gears which were offered at a really good price. But once I had done some tests and found them suitable, I went back to buy some stock and the price had more than doubled.

I have 19 of these in stock which you can have for £4.00 each plus postage which is cheaper than HobbyKing are selling them for at the moment.

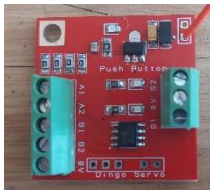


I have often been asked about garden layouts and what kind of servos one could use there.

With this in mind I have now purchased a small stock of the Turnigy TG9W waterproof servos which you can purchase from me at £5.00 each.

I am hoping that these latest acquisitions will enable me to provide for most of your servo requirements.

5. Push Button Prototype.



This is another small (33x33mm) PCB to interface with our twin boards to allow the use of Push Buttons instead of toggle switches.

It can also be used for those using a wand and studs for operating points and signals.

Once this has been successfully trialled, I hope to develop a 4 way unit for use with the Multi control board.

Well, I think that's all for this time

Why not come and visit our stand at one of the shows we will be attending during the Autumn months and see the mounts in the flesh.

The following is a list of shows I will be attending in the weeks ahead.

[Scaleforum](#) 21st to 22nd September 2024

[Farnham & District MRC](#) 12&13th October 2024

[Uckfield MRC](#) 19-20th October 2024

NMRA Convention Maidenhead 26th October 2024

[SHMRC](#) Portsmouth 16th November 2024

[Guildford O Gauge](#) 23rd November 2024

Keep well and happy modelling

With Kind Regards

Dave